

UKULELE LADY

MEDIUM SHUFFLE

RICHARD WHITING & GUS KAHN
ARRANGED: DAVID WEBBER

F
FΔ7
Dm
FΔ7

F
F
D♭7
C7

A

I SAW THE SPLEN - DOUR OF THE MOON - LIGHT ON HO - NA - LU - - - LU

F
F
F

SAY. THERE'S SOME - THING TEN - DER IN THE MOON - LIGHT ON HO - NA -

D♭7
C7
F
Dm
Dm

B

- LU - - - LU SAY. AN ALL THE SEA - CHES ARE FULL OF PEA - CHES

Am
F
F

WHO BRING THEIR UKES A - LONG _____ AND IN THE GLIM - MER OF THE

F
D♭7
C7
F
FΔ7
Dm
FΔ7

C

MOON - LIGHT THEY LIKE TO SING THIS SONG _____ IF YOU LIKE A UK - U - LE - LE LA - DY

F
FΔ7
Dm
FΔ7
Gm7
C7
Gm7
C7

UK - U - LE - LE LAD - DY LI - KE YOU _____ IF YOU LIKE TO LIN - GER WHERE IT'S SHA - DY

Gm7



C7



F



F



FΔ7



Dm



FΔ7



D



UK - U - LE - LE LA - DY LIN - GER TOO — IF YOU KISS A UK - U - LE - LE LAD - DY



AND YOU PRO - MISE EV - ER TO BE TRUE — AND SHE FINDS N - NOTH - ER UK - U - LE - LE



E

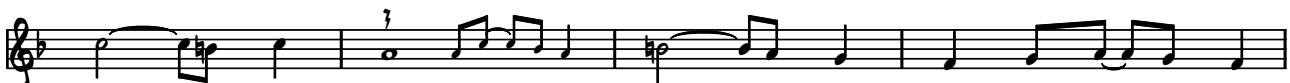
AN AW-FUL LOT



LA - DY FOOL - IN' ROUND WITH YOU, MAY — BE SHE'LL SIGH,



AND MAY-BE NOT



MAY — BE SHE'LL CRY MAY — BE SHE'LL FIND SOME - DO - DY ELSE



AND BY AND

F



BY AND BY TO SING TO WHERE IT'S COOL AND SHA - DY



WHERE THE TRIC - KY WIC - KEY WAC - KY WOO — IF YOU LIKE A U - KU - LE - LE LA - DY



U - KU - LE - LE LA - DY LIKE YOU.