

YOUR FEET'S TOO BIG

Ada Benson & Fred Fisher
arr. D.M.W

A

D7 / / / G#°7 / D7 / G6 / / G°7 G6 / / G°7

B

meat on your bones_ no sign of a pot,_ You looks in the mir - ror and you thinks you's hot,_ you

D7 / / G#°7 D7 / / / G G Am7 G°7 / G7 /

been to the den - tist, had your mo - lars glis - tened Oh boy, but your gal won't lis - ten. Your

C / / / Eb7 / G°7 / G6 / / / G6 / / G°7



D7 C#7 D7 / D7 Eb7 C D6 G6 G#°7 Am7 D



D7 / / / G#°7 / D7 / G6 / / G°7 G6 / / G°7



D7 / / G#°7 D7 / / / G G Am7 G°7 / G7 / C / / /



Eb7 / G°7 / G6 / / / G6 / / G°7 D7 C#7 D7 /



D7 Eb7 C D6 G6 G#°7 Am7 D



D7 C#7 D7 / D7 C#7 D7 / G7 G°7 G7 / G7 G°7 G7 / D7 C#7 D7 /

D

D7 C#7 D7 / G6 G G G / G6 G -

D7 / / / G#°7 / D7 / G6 / / G°7 G6 / / G°7

E

Now up in Har-lem at a ta - ble for two, - There's four of us: me, your big feet and you, - From your

D7 / / G#°7 D7 / / / G G Am7 G°7 / G7 /

ank - les up, you sure is sweet, - but from the ank - les down? **TOO MUCH FEET! Oh Your**

C / / / Eb7 / G°7 / G6 / / / G6 / / G°7

feet's too big, - Don't want you cos your feet's too big, - Can't stand you cos your

D7 C#7 D7 / D7 Eb7 C D6 G6 G#°7 Am7 D D7 / / /

F Open for hot solos, ensemble whistlin

feet's too big, - Hate you cos your feet's too big _____

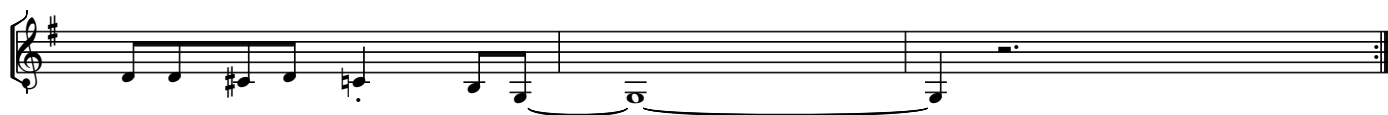
G[°]7 / D7 / G6 / / G[°]7 G6 / / G[°]7 D7 / / G[°]7 D7 / / / G G Am7



G[°]7 / G7 / C / / / E^b7 / G[°]7 / G6 / / / G6 / / G[°]7 D7 C[°]7 D7 /



D7 E^b7 C D6 G6 G[°]7 Am7 D



Shwa shwa - wah_ Shwa shawa-wah, _ Shwa shwa - wah, _ Shwa shwa - wah, _



Shwa shwa - wah, _ Schwa! Schwa! Schwa shwa - wah.

D7 C[°]7 D7 / D7 C[°]7 D7 / G7 G[°]7 G7 / G7 G[°]7 G7 / D7 C[°]7 D7 /



D7 C[°]7 D7 / G6 G G / G6 G -

