

It's Tight Like That

B.Uke.

arr. D M W

A

T
A
B

T
A
B

T
A
B

B Vocal chorus 1/2

F / B \flat 6 / F / C7 / F / B \flat 6 B \flat m6

T

Lis - ten here folks, I'm gon - na sing a li'l song, _ But you must - n't get mad cos I
 Lit - tle brown roo - ster met a lit - tle black hen, _ And he fixed up a date at the

F / / F7 B \flat 6 / / / B \flat 7 / / / B \flat 7 / F7 /

T

mean you no wrong_ Oh it's tight like that, Bee - dle - um - bum You know it's tight like that,
 barn ar - ound ten, _

F7 / / Eb7 C7 / / C°7 G7 / / C7

Bee - dle - um - bum _ Hear me talk - in' to ya I mean it's tight like

F F7 Bb6 Bbm6 F C°7 C7 C7+ F F7 Bb6 Bbm6 F

that _____ that _____

F F F F Bb6 Bb6

F F C F E+ F C7

F / Bb6 / F / C7 / F / Bb6 Bbm6

Man - dy Lee Jones she does her vamp-in at night _ And she does -n't get home till it is
I nev - er have a sing - le girl at a time _ Al - ways have a - round six or sev - en,

F / / F7 Bb6 / / / Bb7 / / / Bb7 / F7 /



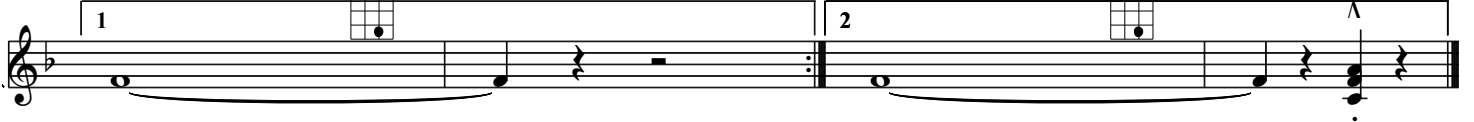
go - in' day light _ Oh it's tight like that, Bee - dle - um - bum, _ You know it's tight like that,
 eight _ or nine _

F7 / / Eb7 C7 / / C°7 G7 / / C7



Bee - dle - um - bum _ Hear me talk - in' to ya I mean it's tight like

F F7 Bb6 Bbm6 F C°7 C7 C7+ F F7 Bb6 Bbm6 F F



that _____

that _____