

It's Tight Like That

Uke. III

arr. D M W

F B♭ F C7 F B♭ C7

[A] F B♭ F C7 F B♭m F F7

B♭ B♭7 B♭7 F7 F7 E♭7 C7 C°7

G7 C7 F F7 B♭ B♭m F C°7 C7 C7+

F / B♭ / F / C7 / F / B♭ B♭m

[B] Vocal chorus 1/2

Lis - ten here folks, I'm gon - na sing a li'l song, — But you must - n't get mad cos I
 Lit - tle brown roo - ster met a lit - tle black hen, — And he fixed up a date at the

F / / F7 B♭ / / / B♭7 / / / B♭7 / F7 /

mean you no wrong_ Oh it's tight like that, Bee - dle - um - bum_You know it's tight like that,
 barn ar - ound ten, —

F7 / / Eb7 C7 / C7 C°7 G7 / / C7

Bee - dle - um - bum _ Hear me talk - in' to ya I mean it's tight like

F F7 Bb Bbm F C°7 C7 C7+ F F7 Bb Bbm F

that _____ that _____

F / B♭ / F / C7 / F / B♭ B♭m

D Vocal chorus 3/4



Man - dy Lee Jones she does her vamp-in at night _ And she does -n't get home till it is
I nev - er have a sing - le girl at a time _ Al - ways have a - round six or sev - en,

F / / F7 B♭ / / / B♭7 / / / B♭7 / F7 /



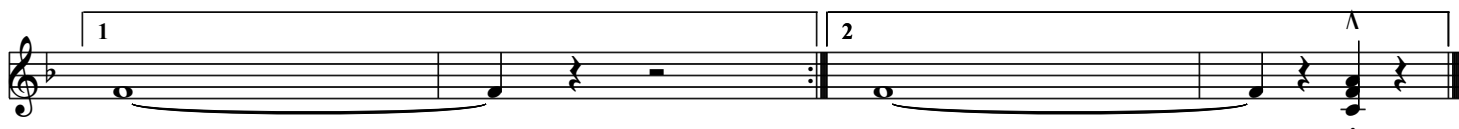
go - in' day light _ Oh it's tight like that, Bee - dle - um - bum, _ You know it's tight like that,
eight _ or nine _

F7 / / E♭7 C7 / C7 C°7 G7 / / C7



Bee - dle - um - bum _ Hear me talk - in' to ya I mean it's tight like

F F7 B♭ B♭m F C°7 C7 C7+ F F7 B♭ B♭m F



that _____

that _____