

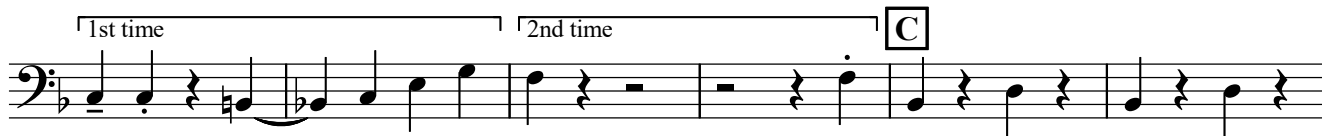
See separate sheet for Vamp rhythm. Look out for 1st/2nd time options before C.

I'll See You In My Dreams

Isham Jones and Gus Kahn

Arr. DMW after Joe Brown

Bass



C⁹ \oplus



A single staff of music in bass clef with a key signature of one flat. The notes are: G2, A2, B2, C3, D3, E3, F3, G3, A3, B3, C4, D4, E4, F4, G4, A4, B4, C5. There are rests between the notes.

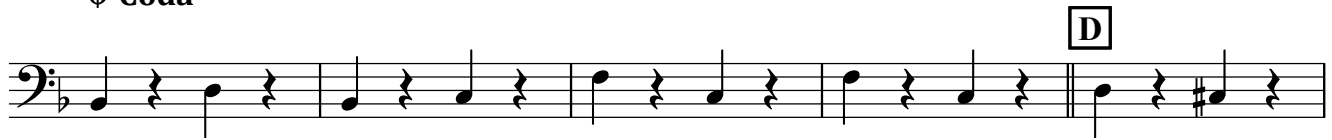
D.S. al \oplus



A single staff of music in bass clef with a key signature of one flat. The notes are: G2, A2, B2, C3, D3, E3, F3, G3, A3, B3, C4, D4, E4, F4, G4, A4, B4, C5. There are rests between the notes. A first ending bracket covers the last two notes (B4, C5), and a second ending bracket covers the last two notes (B4, C5). A repeat sign is at the end of the first ending.

\oplus Coda

D

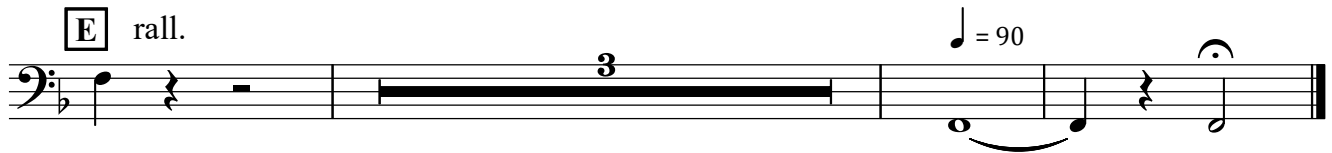


A single staff of music in bass clef with a key signature of one flat. The notes are: G2, A2, B2, C3, D3, E3, F3, G3, A3, B3, C4, D4, E4, F4, G4, A4, B4, C5. There are rests between the notes. A box labeled 'D' is above the final note (C5).



A single staff of music in bass clef with a key signature of one flat. The notes are: G2, A2, B2, C3, D3, E3, F3, G3, A3, B3, C4, D4, E4, F4, G4, A4, B4, C5. There are rests between the notes.

E rall. $\text{♩} = 90$



A single staff of music in bass clef with a key signature of one flat. The notes are: G2, A2, B2, C3, D3, E3, F3, G3, A3, B3, C4, D4, E4, F4, G4, A4, B4, C5. There are rests between the notes. A triplet bracket covers the last three notes (B4, C5, D5). A fermata is over the final note (C5). The tempo marking is $\text{♩} = 90$.